

## An exciting new project for the region

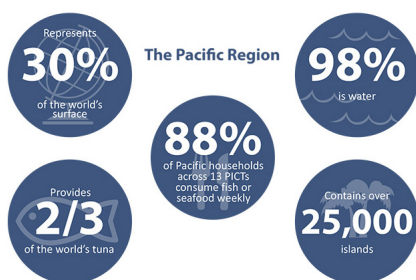


## A Fisheries Science Vessel for the Pacific

A tool to manage and preserve our common resources and ecosystem

[Region and needs](#) [Design](#) [Case study](#) [Missions](#) [Partners](#) [Region voices](#) [Cont acts](#)

Why do we need a Fisheries Science Vessel for the Pacific?



- Managing the sustainability of common marine resources is vital for the Pacific Island countries and territories.
- Pacific tuna fisheries are of global importance, delivering two-thirds of the world's tuna resources, and supporting the livelihoods of millions of people.
- The largest oceanic region must play a major role in integrated ocean/ climate initiatives.
- Satellite observations need to be complemented by in-situ scientific monitoring to understand the health of the ecosystem.
- Properly designed and built for its environment and research goals, an adaptable modern sea-going research vessel is essential.

[- back to the top -](#)

Adaptable, connected and clean

LOA: 43m

Range:

>6,000 NM

Draft: